

ACTION 4:

"PAWS" FOR CLEAN WATER & WILDLIFE



Our beaches are a great place to enjoy a stroll with your four-legged friends when done so responsibly. Here are a few tips to protect this privilege along with our water and our wildlife:

- Pick up after your pet. Help keep our waters swimmable by always picking up and disposing of your pet waste.
- Give wildlife space. Shorebirds (including endangered species) nest along our beaches and our in our wetlands from spring through the summer. Young seals often haul out to take a rest on our beaches in the spring. Leash your dog when near wildlife and respect "Bird Nesting Area" signage and other pet use restrictions.



ACTION 5:

SUPPORT CLEAN WATER!

Peconic Baykeeper relies on dedicated, concerned, and informed community members like you to support our efforts to protect the health of our bays, drinking water, and aquatic ecosystems. You can help support our mission by:

- Making a tax-deductible contribution to support our programs and advocacy
- Volunteering your time and expertise
- Spreading the word about clean water actions
- Staying engaged with local water quality issues
- Subscribing to our email updates and following us on social media
- Reaching out to us with questions and to report water quality concerns

OUR MISSION:

PECONIC BAYKEEPER IS THE ONLY MEMBER-SUPPORTED ORGANIZATION EXCLUSIVELY DEDICATED TO PROTECTING AND RESTORING LONG ISLAND'S DRINKABLE, SWIMMABLE, AND FISHABLE WATERS. ESTABLISHED IN 1998 AS LONG ISLAND'S CLEAN WATER ADVOCATE, PECONIC BAYKEEPER USES SCIENCE, EDUCATION, AND LAW TO DEFEND CRITICAL WATERSHEDS FROM THE TIPS OF THE TWIN FORKS THROUGH THE GREAT SOUTH BAY.



CONTACT US AND LEARN MORE:

WWW.PECONICBAYKEEPER.ORG
INFO@PECONICBAYKEEPER.ORG
631-653-4804
167 RED CREEK RD.
HAMPTON BAYS, NY 11946

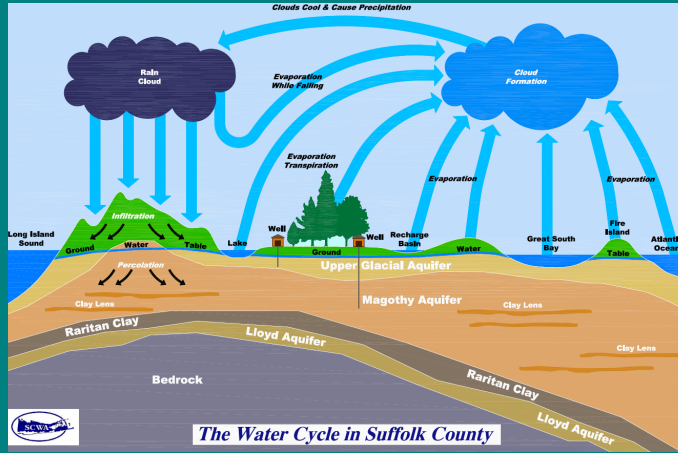


YOUR GUIDE TO CLEAN WATER ACTION!



LONG ISLAND'S WATER

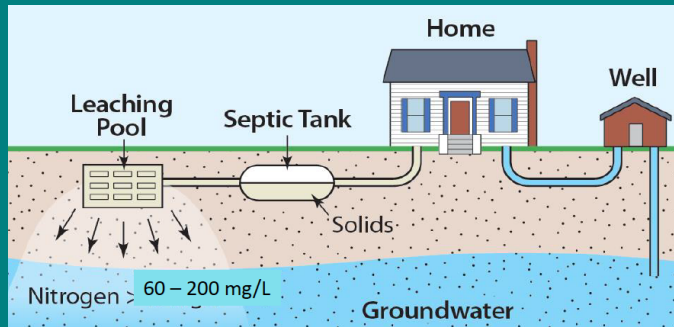
Most of us are familiar with our surface waters (bays, lakes, ponds, etc.) but we don't often give too much thought to the groundwater deep beneath our feet. On Long Island, this groundwater makes up our aquifers- the sole source of our drinking water supply. Just like streams flowing on the surface, groundwater travels underground and eventually ends up in our surface waters. If you've ever witnessed tiny streams of water in the sand moving seaward at low tide, then you have seen our groundwater in motion.



The Water Cycle in Suffolk County

WHAT'S THE PROBLEM?

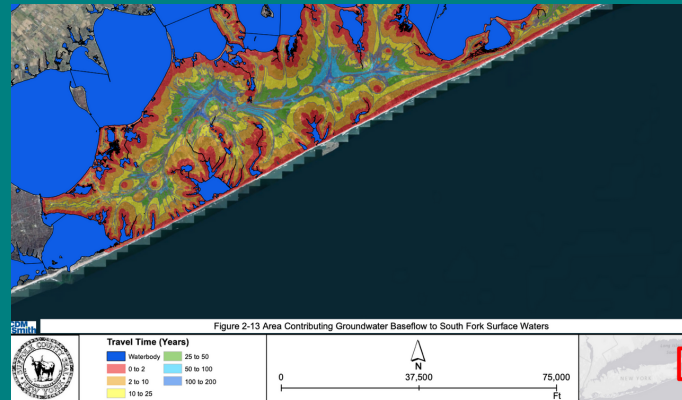
Long Island's sandy soils make for great beaches and allow for the continuous recharge of our aquifers, but they also make our water supply critically vulnerable to contaminants. In Suffolk County, nearly 70% of homes are not connected to sewage treatment plants. This means that wastewater and everything else that goes down our drains enters our groundwater untreated. This pollutes both our drinking water supply and our surface waters.



TYPICAL HOME WASTEWATER DISPOSAL SYSTEM IN SUFFOLK COUNTY

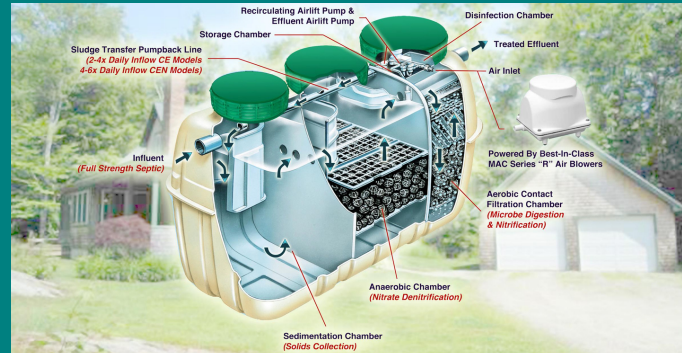
WHAT CAN YOU DO?

The good news is that we can all take important steps to protect our water quality. This brochure is meant to guide you through a few of these actions and we encourage you to share them with your friends, family, and neighbors. After all...this is OUR watershed!



SOUTH FORK GROUNDWATER TO SURFACE WATER TRAVEL TIMES
RED= 0-2 YRS, ORANGE= 2-10YRS, AND YELLOW= 10-25YRS

ACTION 1: UPGRADE YOUR SEPTIC SYSTEM



EXAMPLE OF AN I/A ONSITE WASTEWATER TREATMENT SYSTEM

Untreated wastewater is the single largest contributor of water quality issues in Suffolk County. In particular, nitrogen from wastewater fuels harmful algal blooms that can negatively impact both human and aquatic health. Nitrates in drinking water also carry human health risks. Grant funding is currently available in Suffolk County to help cover the costs of upgrading to an innovative alternative (I/A) onsite wastewater treatment system. Upgrading now will have long-term benefits to both you and our bays. You can learn more at: <https://reclaimourwater.info/>

ACTION 2:

NATURALIZE YOUR LANDSCAPE

Home landscape practices can impact ground and surface water quality far beyond the property line. Fertilizers contain the same nutrients that fuel harmful algal blooms. Pesticides and herbicides (even organic ones) may also end up in our ground and surface waters and also kill non-target organisms. Minimizing your lawn space and including a variety of native plants as a property buffer creates habitat, reduces runoff, and reduces the need for fertilizer and irrigation. Diversifying your turf with clover naturally adds nutrients to your soil. If you hire help, make sure that your landscape company is as invested in our water quality as you are.



VEGETATIVE BUFFERS REDUCE RUNOFF AND MAINTENANCE COSTS

ACTION 3: REDUCE YOUR USE

Runoff from irrigation, our roofs, and pavement eventually makes its way into our ground and surface waters. Household wastewater ends up in the ground too. Follow these tips to reduce your impacts:

- Irrigate infrequently and only when necessary
- Install a "rain barrel" to capture your roof runoff
- Grow native plants that are already adapted to our area and require little to no maintenance
- Use durable grass varieties in your lawn
- Install water-efficient appliances in your home
- Use only eco-friendly cleaning and care products

Rain barrels are a great way to capture rainwater for reuse on your property. Each barrel holds up to 50 gallons of water and can even be hooked up to a soaker hose to passively water your garden.

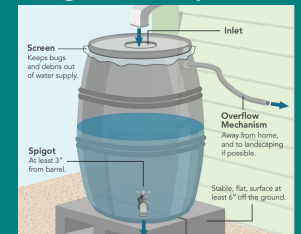


IMAGE COURTESY OF THE CITY OF PALO ALTO STORMWATER PROGRAM